



Moodle LMS HQ Update

Sander Bangma
Head of Moodle LMS

@sanderbangma
#moodledev

Oct 2021

Accessibility Update

- [Accessibility conformance report](#)
- [Moodle 3.11 audited](#) for re-accreditation

WCAG 2.1 report [\[edit | edit source \]](#)

Table 1: Success criteria, Level A [\[edit | edit source \]](#)

Notes:

Criteria	Conformance Level	Remarks and Explanations
1.1.1 Non-text Content ↗	Supports	
1.2.1 Audio-only and Video-only (Prerecorded) ↗	Supports	Moodle does not natively have audio and video content but it provides options for content creators to upload video/audio content with captions and subtitles. Video/audio transcripts can also be provided by content creators.
1.2.2 Captions (Prerecorded) ↗	Supports	Moodle provides options for content creators to attach captions to uploaded audio and video content.
1.2.3 Audio Description or Media Alternative (Prerecorded) ↗	Not applicable	Content creators can upload audio and video content with audio descriptions or media alternatives.
1.3.1 Info and Relationships ↗	Supports	
1.3.2 Meaningful Sequence ↗	Supports	

Status UPDATE



- **Code freeze is here! (Oct 4th)**
- **Many of the major changes have landed (information architecture)**
- **UX projects continuing to finetune changes and visual design**
- **We will take a moment to take stock prior to launching into QA cycle**
- **Working on exploratory test sessions**

Moodle 4.0 scheduled release timeline



- **October 4: Code freeze**
- **November 1: QA cycle start**
- **December 13: Release**

Where can I follow the developments?

- Our [QA site](#)
- Our [project prototype site](#)
- Our [code repository](#)
- Our [issue tracker](#) (requires tracker login)
- Our [developer update doc](#)
- Our [4.0 UX forum](#)



Team

UX reinforcements!



Uli (UX Lead)



Shasa (UX Designer)

Team

More recruitment!

PHP Developer / DevOps: Community engagement team

Coming soon:

PHP Developer role

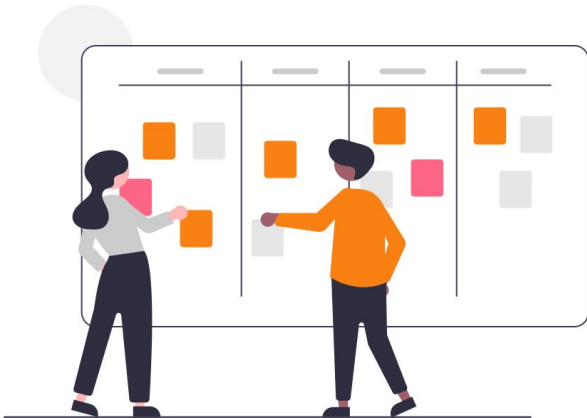
Contact me: sander@moodle.com

Moodle 4.0 preview

Work in progress!

UX research

- **Surveys & Workshops**
- Admins, teachers, students



- **Key findings:**
 - Difficulty finding what they need quickly
 - Confusing interface with too many options and completing common tasks is difficult
- **Teacher user journey:**
 - Navigate between courses at speed
 - Create, edit, move, duplicate content
 - Grading, activity, resources, quiz
- **Student user journey:**
 - Navigate between courses and activities
 - What do I need to do next?
 - Tracking progress

Key theme areas



Teacher



Student



Teacher



Student



Teacher



Student



Teacher



Teacher

Navigation

Course creation

Do a course

Dashboard

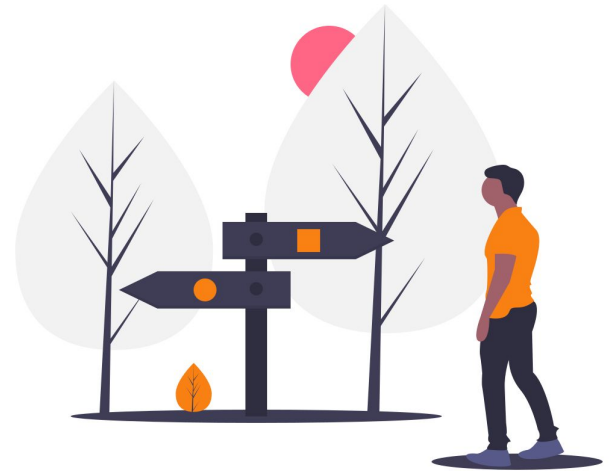
Assignment
(activities)

Gradebook
(key pages)

Moodle 4.0

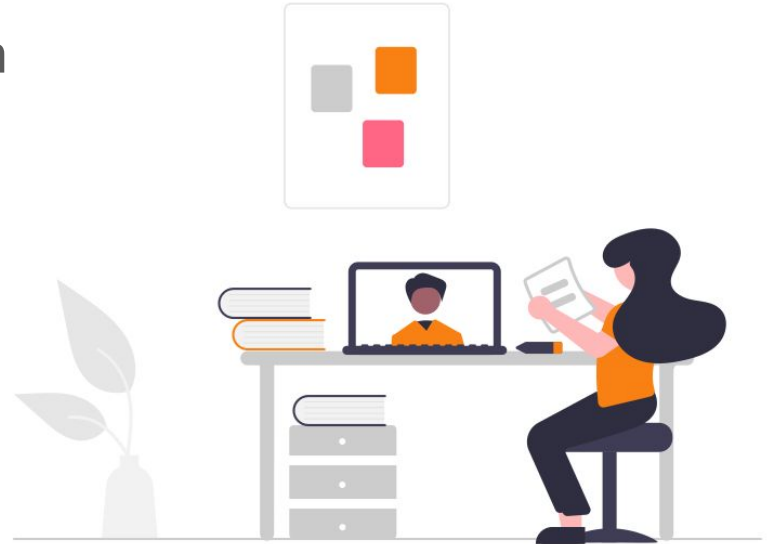
Navigation

- Improve site, course and module navigation
- Simplify navigation hierarchy
- Reduce cognitive load
- Single pathway to a destination
- Common patterns
- Contextually relevant
- Consistency between desktop and mobile



Course experience

- New course page structure
- Course index for quick navigation
- Improved drag and drop
- Collapsible sections
- Activity cards
- New activity icons
- Collapsible blocks area





Welcome back, Laura! 🙌

Timeline

All ▾

Sort by dates ▾

🔍 Search...

Monday, 26 July 2021

10:00  [Languages of love](#) Overdue [Add submission](#)
Celebrating Cultures · Assignment is due

Tuesday, 27 July 2021

14:00  [My home country](#) [View workshop summary](#)
Celebrating Cultures · Workshop deadline for submissions

18:00  [Your views on this course](#) [Answer the questions](#)
Digital Literacy · Feedback closes

Wednesday, 28 July 2021

12:00  [Join the digital literacy discussions](#) [View](#)
Digital Literacy · Forum is due

18:00  [My home country](#) [View workshop summary](#)
Celebrating Cultures · Workshop deadline for assessment

20:00  [How's your social media](#) [Attempt quiz](#)
Digital Literacy · Quiz closes

Show 25 ▾

My courses



Class and Conflict in World Cinema
Cinema

20% complete



World tour
Geography



Time management
Wellbeing



Systems analysis
Systems



World's greatest forests
Geography



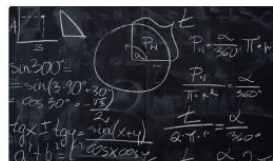
Introduction to social studies
Social studies



Basic math
Math



Musical studies
Wellbeing



Introduction to 2021
Miscellaneous



General

- Film Education Study Gui...

- La Mis en Scene

- Glossary of Characters

- World Cinema Forum

City of God Highlighted

- General discussion

- Script analysis

- City of God - Available o...

La Haine 

- Movie chapters 

- What did you learn in thi... 

Class and Conflict in World Cinema

Course

Settings

Participants

Grades

Reports

More 

General

Collapse all

In this module we will analyse two very significant films - City of God and La Haine, both of which depict violent lives in poor conditions, the former in the favelas of Brazil and the latter in a Parisian banlieue. We will look at how conflict and class are portrayed, focusing particularly on the use of mise en scène.



BOOK

Film Education Study Guide

✔ Done: View



ASSIGNMENT

La Mise en Scene

✔ Done: View

✔ Done: Make a submission

Opens: Friday, 1 April 2021 17:00**Closes:** Wednesday, 14 April 2021 17:00

Discuss the importance of mise en scène in creating meaning and generating response in City of God and La Haine. One of our students has kindly offered her answer here as an example of a high "B" grade material. These are the most influential movies of the century! There are many examples of mise en scène in film. Some of the most famous and well-executed are: Citizen Kane: During a flashback to Charles Kane's childhood, director Orson Welles was deliberate with composition and depth of space. We strongly recommend to complete this activity as soon as possible since a lot of important topics are covered here.



Class and Conflict in World Cinema

[Course](#) [Settings](#) [Participants](#) [Grades](#) [Reports](#) [More](#) 

▼ General

[Collapse all](#)

In this module we will analyse two very significant films - City of God and La Haine, both of which depict violent lives in poor conditions, the former in the favelas of Brazil and the latter in a Parisian banlieue. We will look at how conflict and class are portrayed, focusing particularly on the use of mise en scène.



BOOK

Film Education Study Guide

✓ Done: View



ASSIGNMENT

La Mise en Scene

✓ Done: View

✓ Done: Make a submission

Opens: Friday, 1 April 2021 17:00

Closes: Wednesday, 14 April 2021 17:00

Discuss the importance of mise en scène in creating meaning and generating response in City of God and La Haine. One of our students has kindly offered her answer here as an example of a high "B" grade material. These are the most influential movies of the century! There are many examples of mise en scène in film. Some of the most famous and well-executed are: Citizen Kane: During a flashback to Charles Kane's childhood, director Orson Welles was deliberate with composition and depth of space. We strongly recommend to complete this activity as soon as possible since a lot of important topics are covered here.



Calendar

[< April](#) [May 2021](#) [June >](#)

Sun	Mon	Tue	Wed	Thu	Fri	Sat
1	2	3	4	5	6	
7	8	9	10	11	12	13
14	15	16	17	18	19	20
21	22	23	24	25	26	27
28						

[Go to full calendar](#) • [Import & export](#)

Upcoming events

Workshop test deadline for assessment
Tomorrow, 6:45PM

[Go to calendar](#)



General

● Film Education Study Gui...

● La Mis en Scene

○ Glossary of Characters

○ World Cinema Forum

City of God Highlighted

General discussion

○ Script analysis

City of God - Available o...

La Haine

Movie chapters

What did you learn in thi...

Class and Conflict in World Cinema / La Mis en Scene



ASSIGNMENT

La Mis en Scene

Assignment

Settings

Overrides

Advanced grading

More

✓ Done: View

✓ Done: Make a submission

Opens: Friday, 1 April 2021 17:00**Closes:** Wednesday, 14 April 2021 17:00

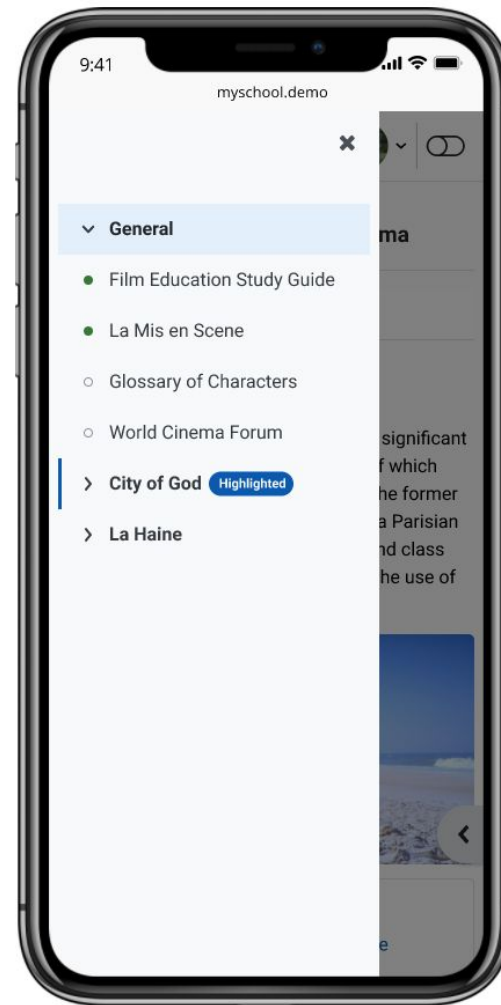
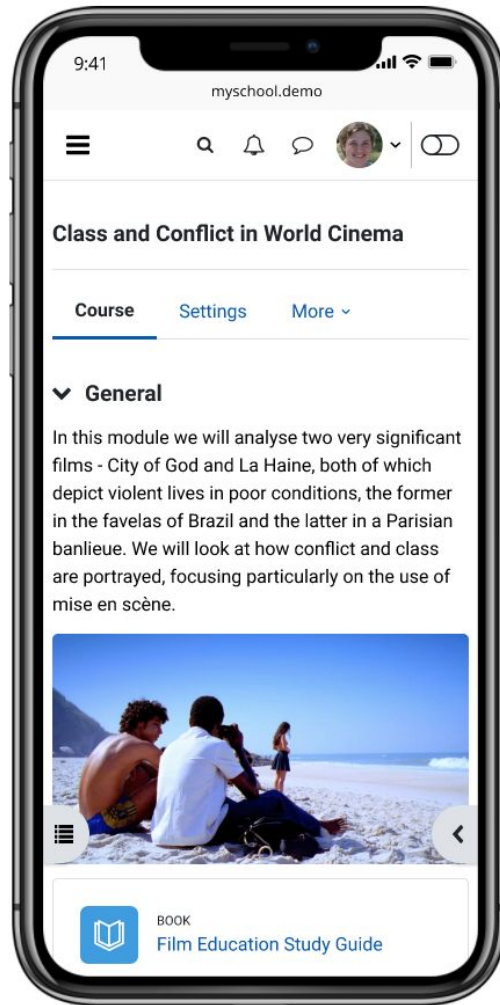
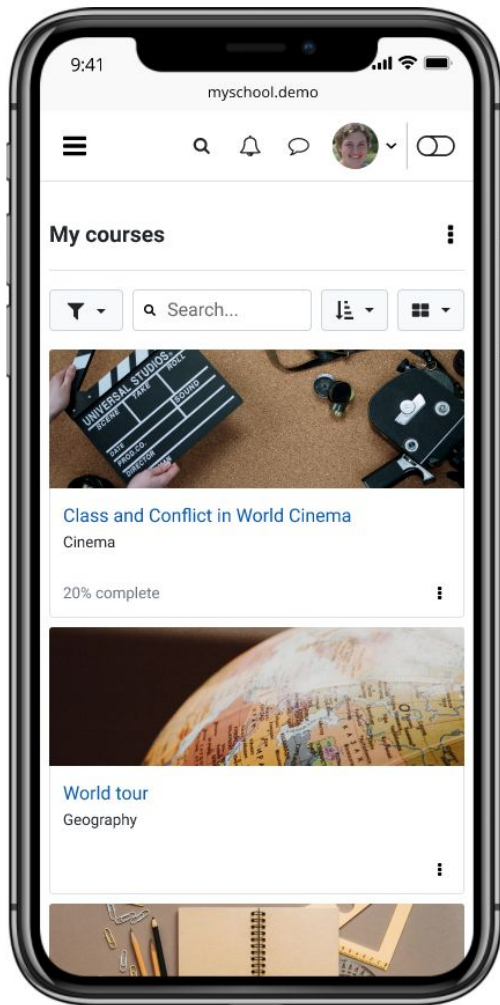
Discuss the importance of *mise en scène* in creating meaning and generating response in *City of God* and *La Haine*. One of our students has kindly offered her answer here as an example of a high "B" grade material. These are the most influential movies of the century! There are many examples of *mise en scène* in film. Some of the most famous and well-executed are: *Citizen Kane*: During a flashback to Charles Kane's childhood, director Orson Welles was deliberate with composition and depth of space. We strongly recommend to complete this activity as soon as possible since a lot of important topics are covered here.

View all submissions

Grade

Grading summary

Hidden from students	No
Participants	10
Submitted	1
Needs grading	1



Moodle 4.0 highlights

- [Login](#) page
- Onboarding experience
 - [Welcome message](#)
 - [Updated user tours](#)
- Dashboard
 - [Calendar](#) & [Timeline](#)
- Navigation
 - [Primary](#) / [Secondary](#) / [Tertiary](#)
- [My courses](#) page
- [Course](#) page
 - [Editing on](#)
 - [Course index](#)
 - Activity [icons](#) & [cards](#)
 - [Footer update](#)

Moodle 4.0 highlights

- [Atto accessibility \(MUA\)](#)
- [LTI 1.3 Advantage provider](#)
- [BBB integration](#)
- [Report Builder](#)
 - System reports
 - Custom reports
- [Question Bank](#)
- [Moodle configuration](#)
- [Removing unused plugins](#)
- [Component library](#)

Thank you!



sander@moodle.com
@sanderbangma